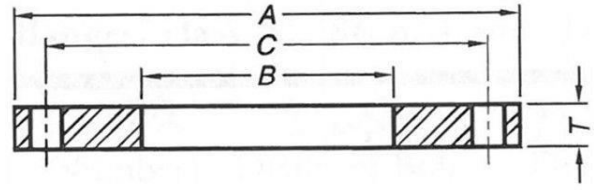
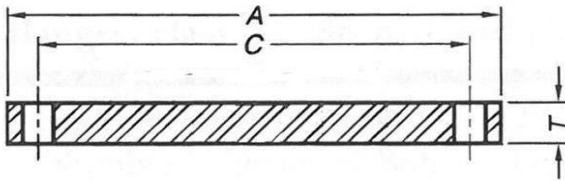


**TABLE 2 AWWA C207 CLASS D RING & BLIND FLANGES**



Nominal Pipe Size	O.D. Flange	Thickness		Bore	Drilling			Approx. Weight per Piece (LBS)	
		Slip On	Blind		Diam. of Bolt Circle	Diam. of Bolt Holes	Number of Bolts Holes	Slip On	Blind
NPS	A	T	T	B	C				
4	9	0.625	0.625	4.57	7.5	0.75	8	8	11
5	10	0.625	0.65	5.66	8.5	0.875	8	9	14
6	11	0.688	0.693	6.72	9.5	0.875	8	11	19
8	13.5	0.688	0.812	8.72	11.75	0.875	8	15	33
10	16	0.688	0.953	10.88	14.25	1	12	19	54
12	19	0.812	1.117	12.88	17	1	12	33	90
14	21	0.938	1.133	14.19	18.75	1.125	12	47	111
16	23.5	1	1.265	16.19	21.25	1.125	16	60	155
18	25	1.062	1.331	18.19	22.75	1.25	16	64	185
20	27.5	1.125	1.448	20.19	25	1.25	20	79	244
22	29.5	1.188	1.568	22.19	27.25	1.375	20	90	304
24	32	1.25	1.661	24.19	29.5	1.375	20	112	378
26	34.25	1.312	1.786	26.19	31.75	1.375	24	129	466
28	36.5	1.312	1.906	28.19	34	1.375	28	141	565
30	38.75	1.375	2.008	30.19	36	1.375	28	164	671
32	41.75	1.5	2.15	32.19	38.5	1.625	28	211	834
34	43.75	1.5	2.252	34.19	40.5	1.625	32	220	959
36	46	1.625	2.37	36.19	42.75	1.625	32	261	1116
38	48.75	1.625	2.506	38.19	45.25	1.625	32	301	1325
40	50.75	1.625	2.609	40.19	47.25	1.625	36	313	1438
42	53	1.75	2.729	42.19	49.5	1.625	36	364	1706
44	55.25	1.75	2.849	44.19	51.75	1.625	40	387	1935
46	57.25	1.75	2.952	46.19	53.75	1.625	40	404	2153
48	59.5	1.875	3.072	48.19	56	1.625	44	460	2420
50	61.75	2	3.196	50.19	58.25	1.875	44	507	2712

52	64	2	3.315	52.19	60.5	1.875	44	542	3021
54	66.25	2.125	3.435	54.19	62.75	1.875	44	614	3355
60	73	2.25	3.779	60.19	69.25	1.875	52	763	4481
66	80	2.5	4.136	66.19	76	1.875	52	1021	5890
72	86.5	2.625	4.48	72.19	82.5	1.875	60	1203	7458
78	93	2.75	.....	78.19	89	2.125	64	1374	.....
84	99.75	2.875	.....	84.19	95.5	2.125	64	1646	.....
90	106.5	3	.....	90.19	102	2.438	68	1872	.....
96	113.25	3.25	.....	96.19	108.5	2.438	68	2291	.....
102	120	3.25	.....	102.19	114.5	2.688	72	2485	.....
108	126.75	3.375	.....	108.19	120.75	2.688	72	2884	.....
114	133.5	3.5	.....	114.19	126.75	2.938	76	3214	.....
120	140.25	3.5	.....	120.19	132.75	2.938	76	3558	.....
126	147	3.75	.....	126.19	139.25	3.188	80	4065	.....
132	153.75	3.875	.....	132.19	145.75	3.188	80	4614	.....
138	160.5	4	.....	138.19	152	3.438	84	5047	.....
144	167.25	4.125	.....	144.19	158.25	3.438	84	5680	.....

**Notes:**

\*Pressure rating at atmospheric temperature: sizes 4-12 in. inclusive, 175 psi; sizes larger than 12 in., 150 psi. These flanges have the same OD and drilling as ANSI/ASME B16.1 class 125 cast-iron flanges. In sizes 24in. and smaller, they also match ANSI/ASME B16.5 150-psi standard for steel flanges. Dimensions are in inches. Weights are in pounds.